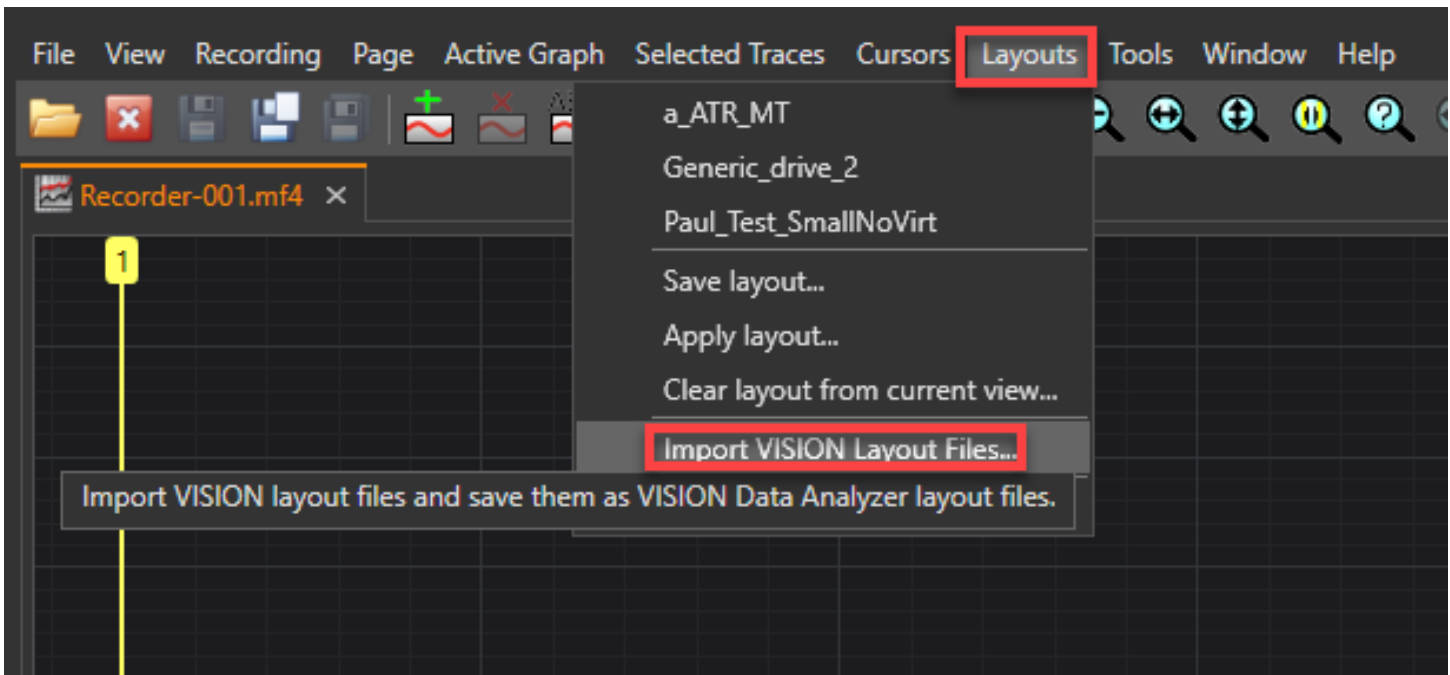


# Converting VISION Layout Files to Use with VDA

As the MDF4 file format becomes more and more popular, VISION Data Analyzer (VDA) will become the tool of choice for data analysis. One of the main features to make the transition as easy as possible is to enable the import of a VISION REC layout (.rlt) into VDA's new framework. With a few easy steps, you can import all of your existing VISION layout files to be used with VDA.

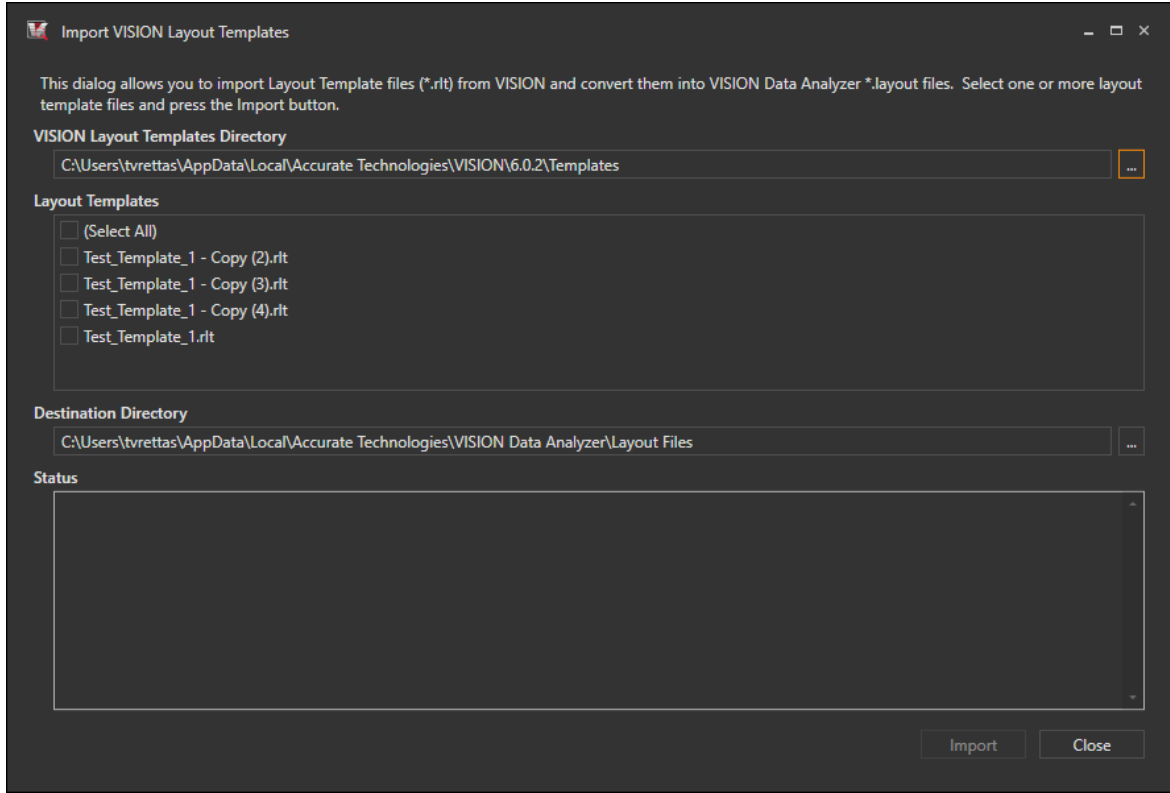
## Starting the Import Process

After opening VDA, open any MDF4 file and go to Layouts>Import VISION Layout Files:

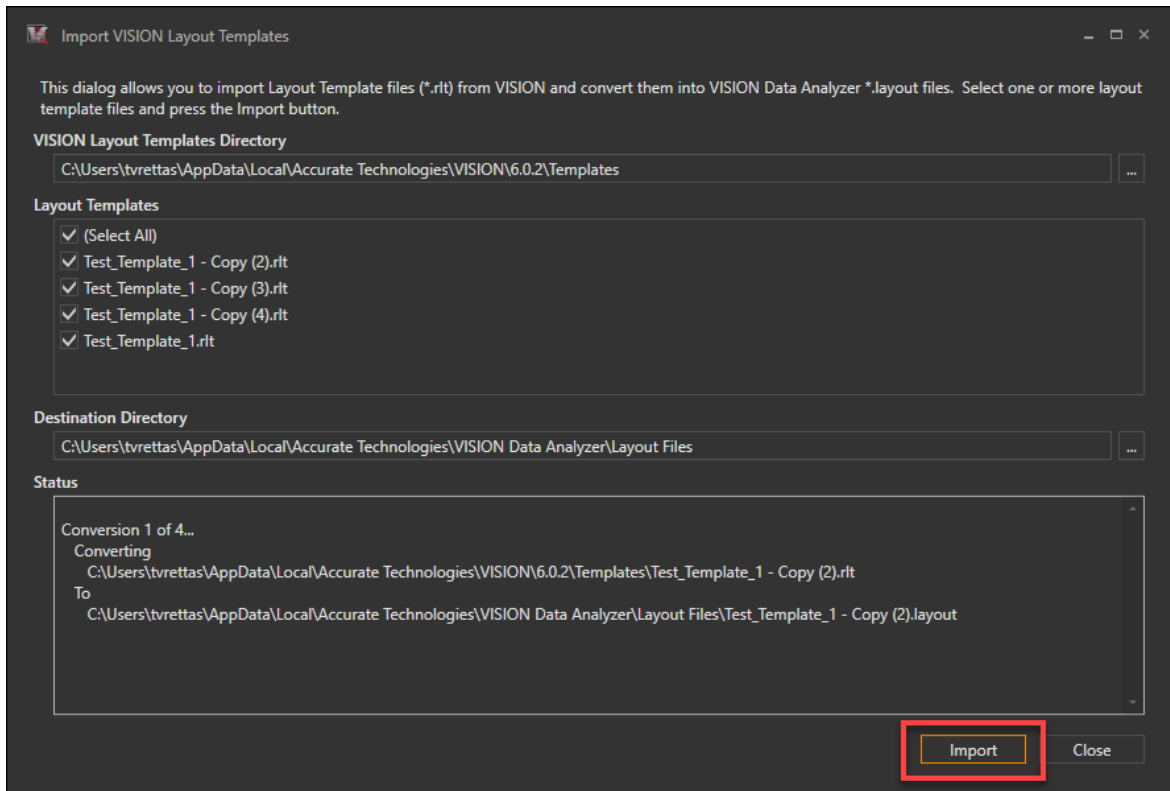


VDA will ask for VISION's layout file directory and bring up a list of whatever it finds. You can also specify a unique directory here:

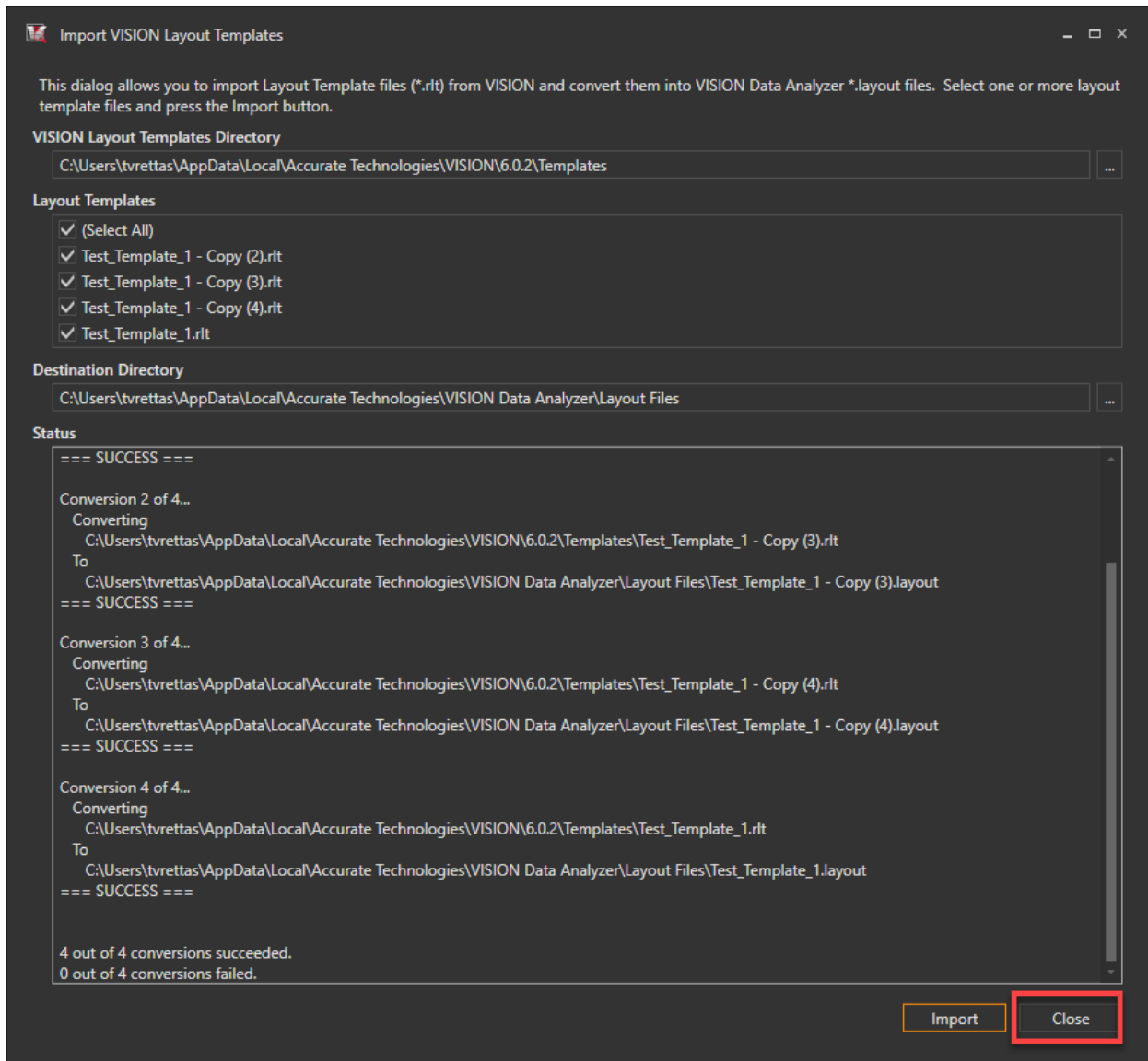




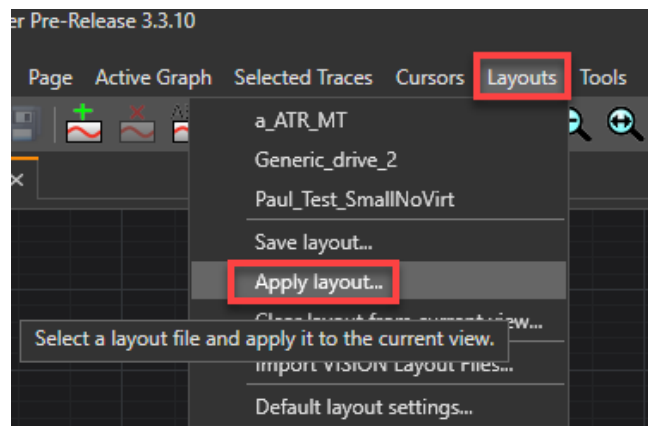
Select the one(s) you wish to convert and hit 'Import.'

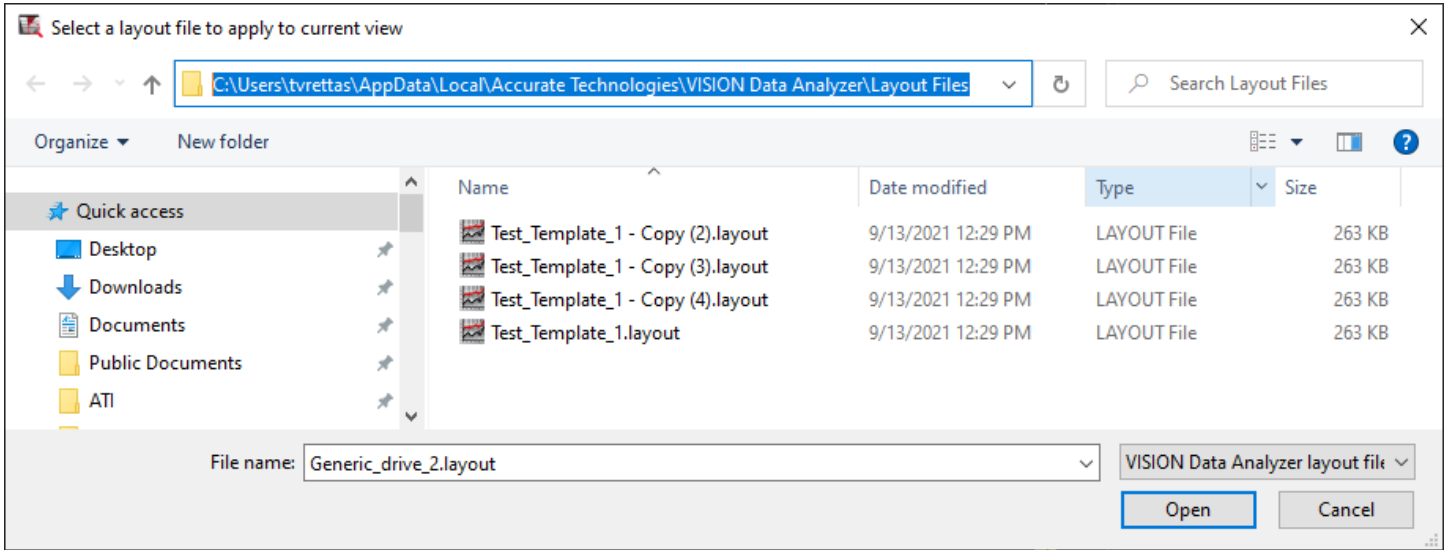


After it finishes, hit 'Close:'



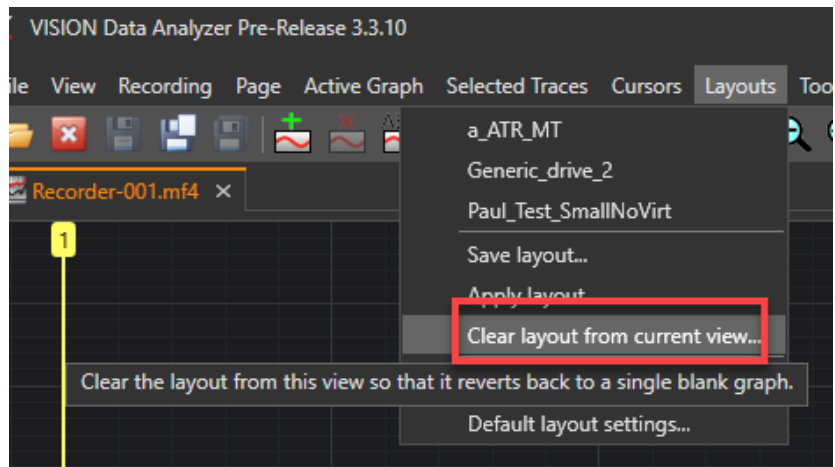
Go to Layouts>Apply Layout. Here you will find the layout files you just imported:





The 15 most recent layouts will appear in the Layouts menu for easy access.

You also have the ability to clear the layout from an open MDF4 file using the 'Clear layout from current view' selection:



For additional questions, contact ATI support at [support@accuratetechnologies.com](mailto:support@accuratetechnologies.com).

Contact ATI Sales at : [sales@accuratetechnologies.com](mailto:sales@accuratetechnologies.com)

**US** +00 (1) 248 848 9200 / **China** +86 138 1023 6357 / **France** +33 (0) 1 72 76 26 10 / **Germany** +49 811 889 97351  
**India** +91 80 41255752 / **Japan** +81 3 6276 8950 / **Sweden** +46 (0) 31 773 7140 / **UK** +44 (0) 1767 652 340