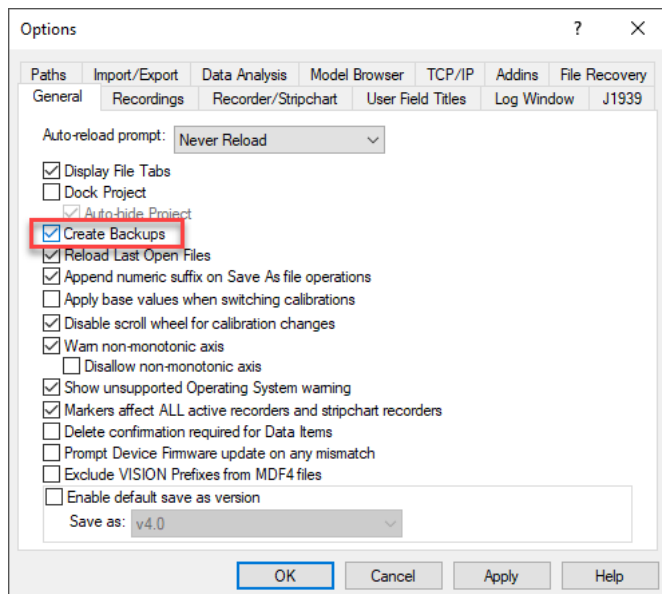


# File Recovery vs. Create Backups



There are currently two different ways that VISION can create backups and/or recover files in the event of an unwanted shutdown. One feature that has existed within VISION for some time is the 'Create Backups' option. With VISION 6.x there is a new feature named 'File Recovery.' See below for how each feature behaves and how they differ.

## Create Backups

This feature is ON by default and can be changed via **Tools>Options in VISION**



When enabled, whenever a file is saved in VISION it will copy that saved file, give it a '.bak' extension and place it in the same directory. Only one backup file per file type is saved if the file names remain the same:

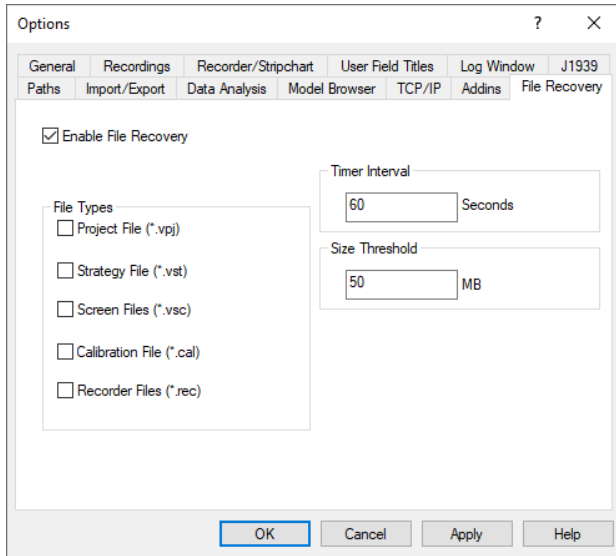
Name	Date modified	Type	Size
 Demo_Strategy.vst	8/10/2021 4:32 PM	ATI VISION Strateg...	13 KB
 Demo_Strategy.vst.bak	6/17/2021 11:13 AM	Backup File	12 KB

To recover one of these backup files, simply remove the '.bak' file extension from the file name.



## File Recovery

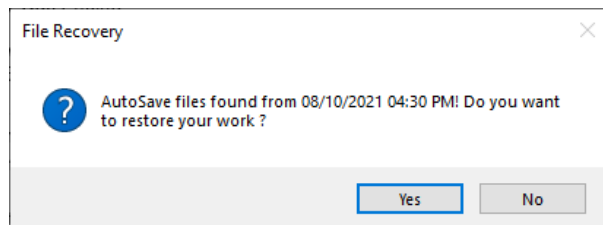
File Recovery works in a way that will save off a copy of each file type you choose to a temporary location and will give you the option to recover in the event of an unwanted shutdown. File Recovery will scan your chosen VISION file types, find the ones that have changed since you have last saved (i.e., the ones marked 'dirty') and save them off to this temporary location. You can find this option in **Tools>Options>File Recovery**:



Here is where you will choose which types of VISION files will be enabled. Timer Interval is the time that VISION will scan for files that have changed (i.e., marked 'dirty'). Size Threshold will only opt to recover files up to this size. When this occurs, you will see an entry in the General Log:

```
08/11/2021 09:58:00:790 | AutoSave: Saved [Working Calibration.192369800.0.cal]
08/11/2021 09:58:00:806 | AutoSave: Saved [Vision Demo.81415136.86.vpj]
08/11/2021 09:58:00:815 | AutoSave: Saved [Initial Screen.192132528.86.vsc]
```

When VISION restarts, you will be prompted to choose to recover your work:



For additional questions, contact ATI support at [support@accuratetechnologies.com](mailto:support@accuratetechnologies.com).

Contact ATI Sales at : [sales@accuratetechnologies.com](mailto:sales@accuratetechnologies.com)

**US** +00 (1) 248 848 9200 / **China** +86 138 1023 6357 / **France** +33 (0) 1 72 76 26 10 / **Germany** +49 811 889 97351  
**India** +91 80 41255752 / **Japan** +81 3 6276 8950 / **Sweden** +46 (0) 31 773 7140 / **UK** +44 (0) 1767 652 340