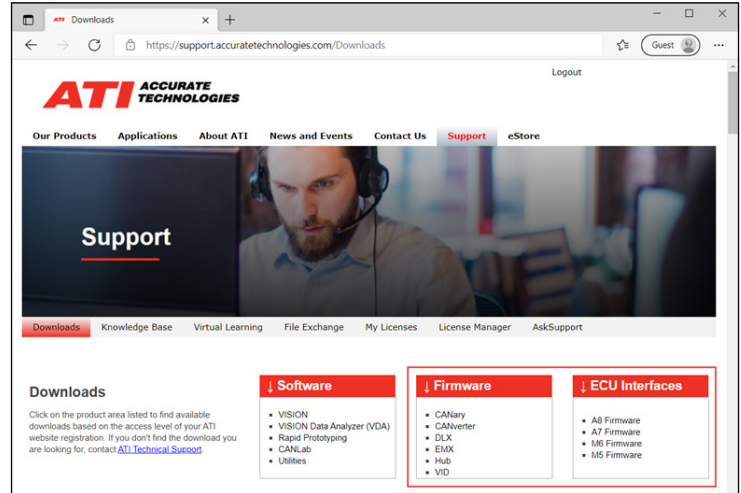
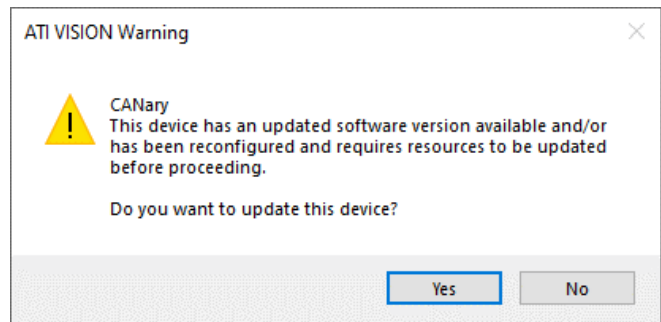


Updating the Firmware of ATI Hardware

Updating the firmware version of ATI hardware helps ensure users get the best performance from their ATI hardware during testing. Firmware updates may also contain fixes or new features requested by users. Every download of VISION comes with the latest released firmware versions providing a quick and easy method of updating ATI hardware. If a newer version of the firmware is released it can also be found at <https://support accuratetechnologies.com/Downloads>.

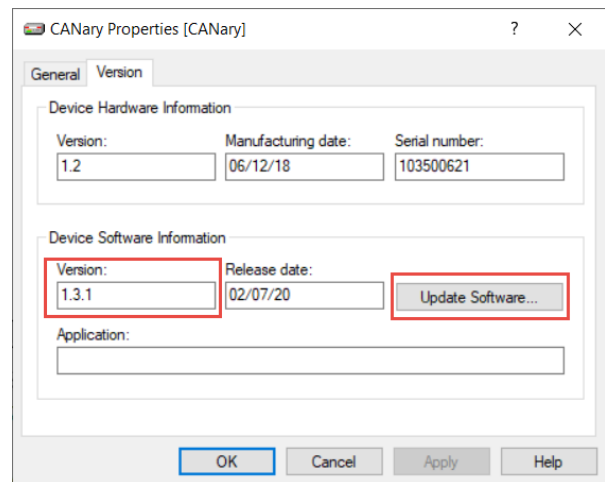


When connecting to ATI hardware VISION will automatically check the firmware level of every device connected in the device tree. If one of the devices is on an older version, VISION will notify the user that there is a newer version available.

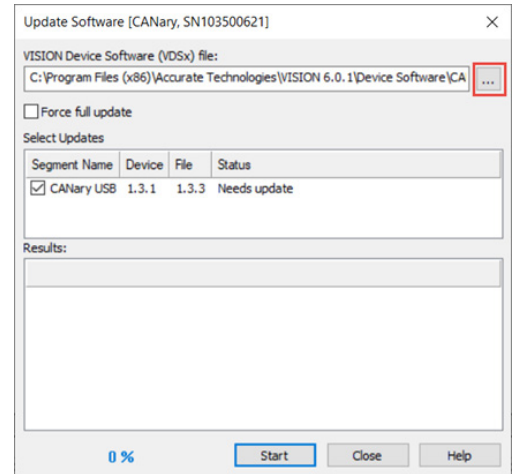


Users can manually verify the firmware level of the hardware in the device tree by connecting and right clicking on the device then select properties -> version.

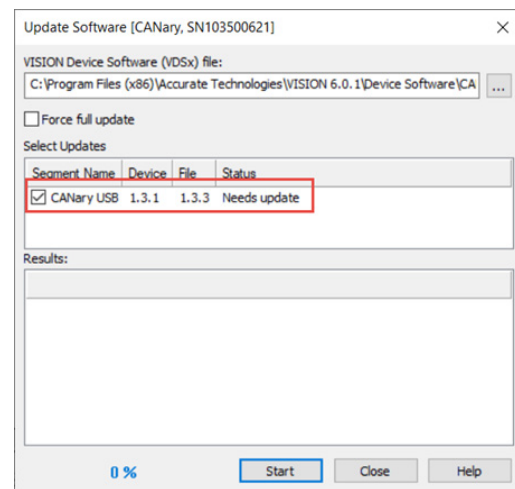
To update the firmware from the version menu select "update software".



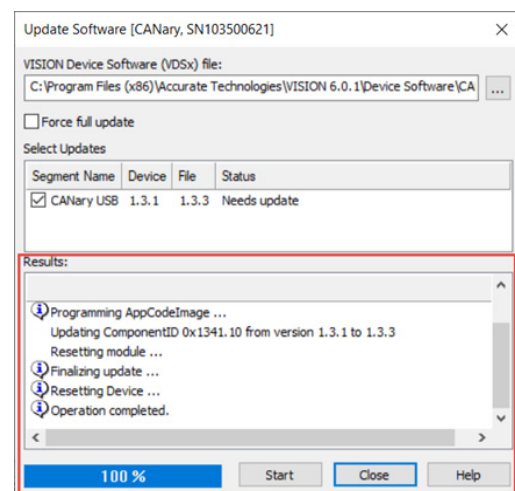
If a newer firmware version was downloaded than what is in the version of VISION being used select the “...” button and specify the location the download was saved in.



Once the firmware version is selected, select the device to be updated and click start to install the selected firmware version.



The Results box will display the status of the update and notify users when the firmware installation is complete.



For additional questions, contact ATI support at support@accuratetechnologies.com.

Contact ATI Sales at : sales@accuratetechnologies.com

US +00 (1) 248 848 9200 / **China** +86 138 1023 6357 / **France** +33 (0) 1 72 76 26 10 / **Germany** +49 811 889 97351
India +91 80 41255752 / **Japan** +81 3 6276 8950 / **Sweden** +46 (0) 31 773 7140 / **UK** +44 (0) 1767 652 340