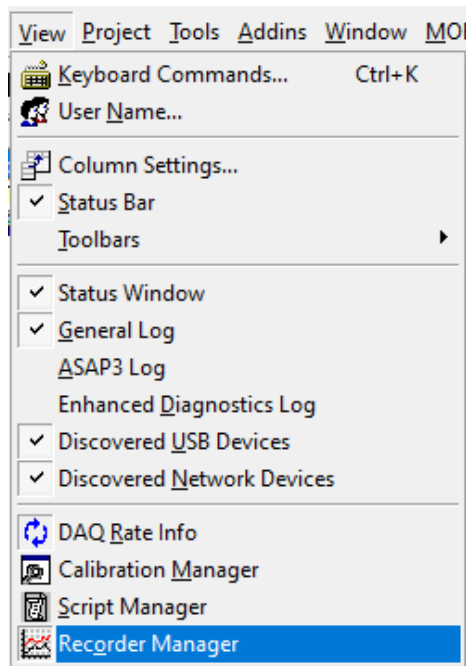


# Using the VISION Recorder Manager

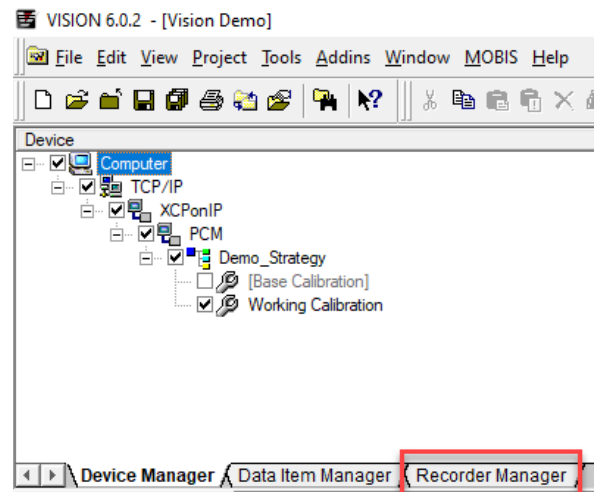
New with VISION 6.0 is the Recorder Manager tab which allows viewing and controlling of any available screen recorders. The Recorder Manager also reveals which recorders exist in both the project and any open screens.

Name	Status	Arm	Start	Stop	View	Cancel	Time Recorded	Time Remaining	Type	Filename
<b>Project Recorders</b>										
Recorder	Waiting for Trigger						00:00:30	00:00:30	Recorder	Recorder.rec
<b>Initial Screen [Screen]</b>										
Many Channels	Post-trigger 54%						00:00:16	00:00:13	Stripchart Rec...	Demo_Recorder-001.rec
Recorder	Post-trigger 59%						00:00:17	00:00:12	Recorder	Recorder-001.rec
<b>StripChart [Screen]</b>										
Stripchart	Post-trigger 65%						00:00:19	00:00:10	Stripchart Rec...	StripChart1-001.rec

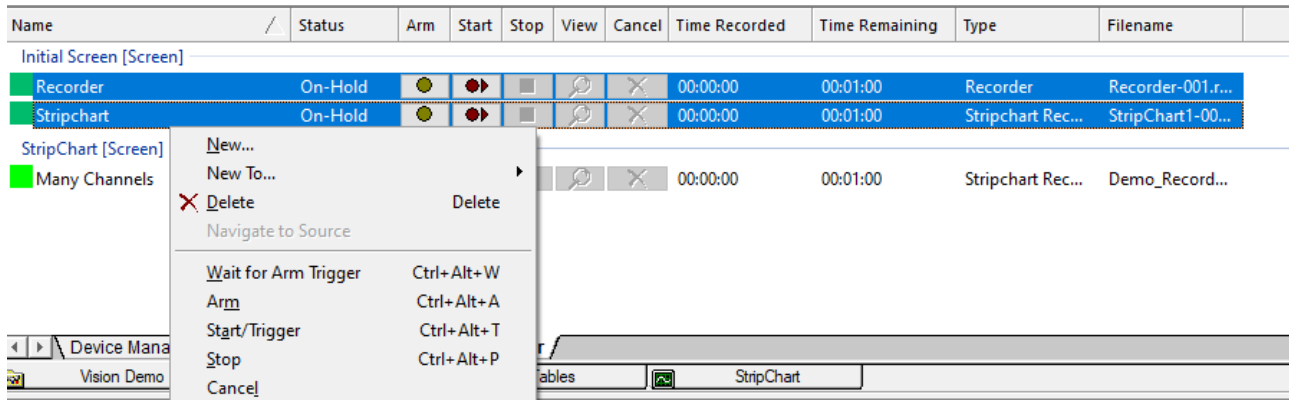
You can find this in **View>Recorder Manager**.



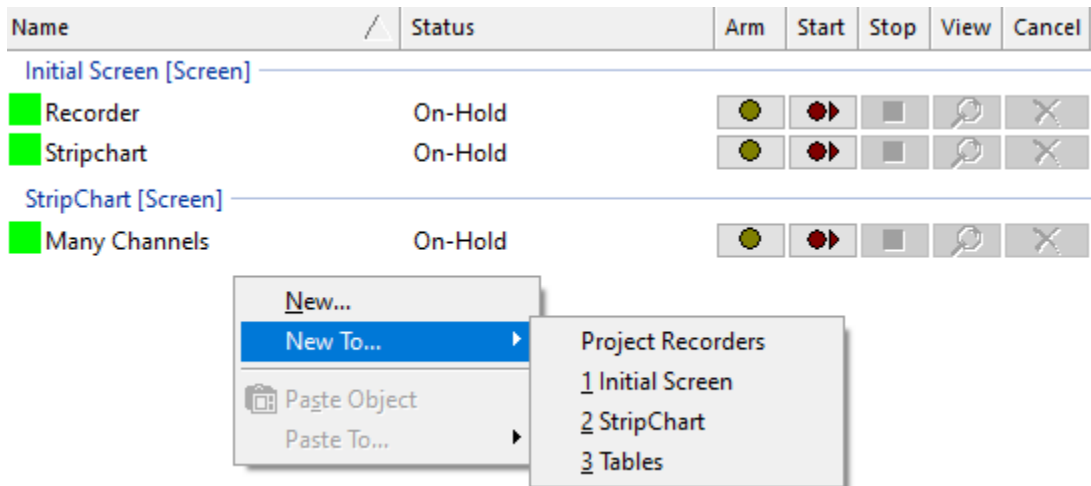
Recorder Manager will appear as a tab next to Data Item Manager:



With the Recorder Manager you can easily view all of your Recorders or Stripcharts in one area, and also control them individually or multiple at the same time. You can multi-select different recorders (using Ctrl/ Shift + left mouse click), then right-click and choose your action:

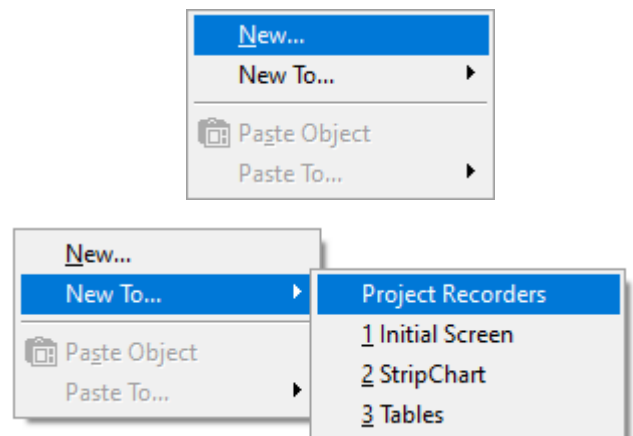


You also have the ability to add a Recorder to an existing screen with the 'New To...' context menu:



### Project Recorders

Another feature within the Recorder Manager is called the Project Recorder. This is a Recorder that lives within your Project and not in any Screen file. Some have used this to create a 'Master Recorder' to be used across multiple projects, regardless of what's in any Screen file. To create one, in the Recorder Manager view right-click in any empty space and hit 'New' or 'New To...>Project Recorders:'



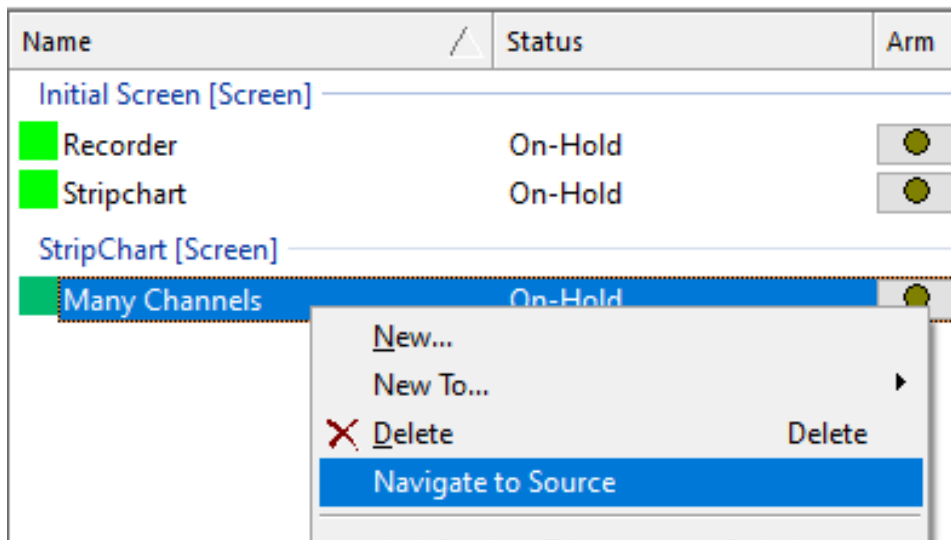
This will create the Project Recorder and you will see it at the top:

Name	Status	Arm	Start	Stop	View	Cancel	Time Recorded	Time Remaining	Type	Filename
<b>Project Recorders</b>										
Recorder	Not confi...						00:00:00	00:00:00	Recorder	Recorder.rec
<b>Initial Screen [Screen]</b>										
Recorder	On-Hold						00:00:00	00:01:00	Recorder	Recorder-001.r...
Stripchart	On-Hold						00:00:00	00:01:00	Stripchart Rec...	StripChart1-00...
<b>StripChart [Screen]</b>										
Many Channels	On-Hold						00:00:00	00:01:00	Stripchart Rec...	Demo_Record...

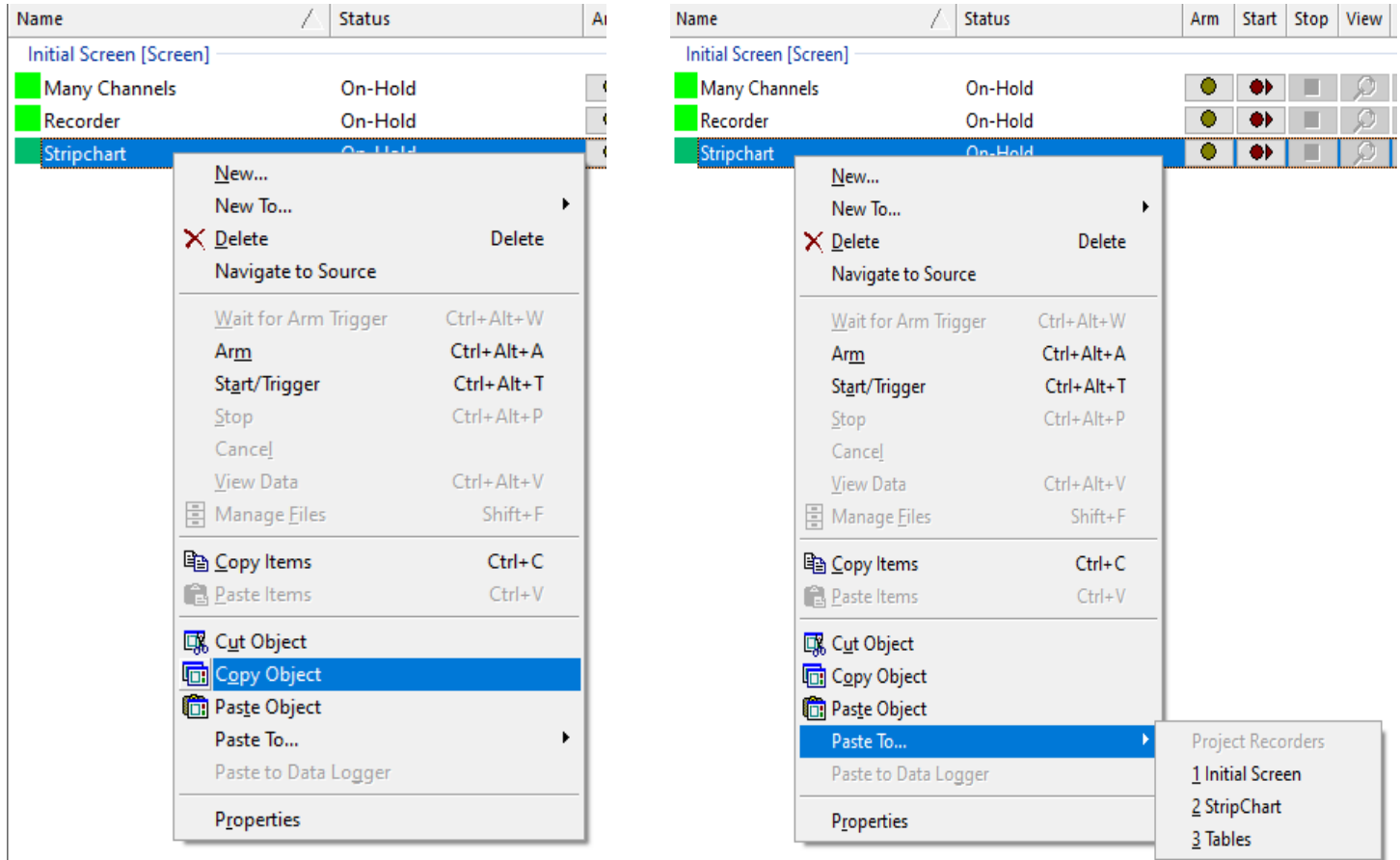
It can be configured just like any other Recorder or Stripchart within this view in its right-click context menu.

### Other Features

Navigate to Source. In the right-click context menu you can 'Navigate to Source.' This will take you to the location of the Recorder or Stripchart you have selected:



Moving Recorders. You can cut or copy a Recorder or Stripchart directly to another screen using the 'Paste To...' function:



For additional questions, contact ATI support at [support@accuratetechnologies.com](mailto:support@accuratetechnologies.com).

Contact ATI Sales at : [sales@accuratetechnologies.com](mailto:sales@accuratetechnologies.com)

**US** +00 (1) 248 848 9200 / **China** +86 138 1023 6357 / **France** +33 (0) 1 72 76 26 10 / **Germany** +49 811 889 97351  
**India** +91 80 41255752 / **Japan** +81 3 6276 8950 / **Sweden** +46 (0) 31 773 7140 / **UK** +44 (0) 1767 652 340